

Esch Sintzel Architekten

Verbindung Plessur - Halde, Chur

Wettbewerb 2009, 1. Preis

Planung: 2009 - 10

Ausführung: 2011 - 12

Adresse: Verbindung Münzweg - Alte Schangfiggerstrasse, Chur

Programm: Fussgängerverbindung mit Schräglift

Bauherrschaft: Kanton Graubünden

Bausumme: CHF 5.4 Mio (BKP2)

Mitarbeit: Claudia Mühlebach

Baumanagement: Zoanni Architekten, Chur

Bauingenieur: Dr. Lüchinger + Meyer Bauingenieure AG, Zürich

Bilder: Walter Mair

Auszeichnungen: Prix Acier - Stahlbauzentrum 2014 / Hase in Bronze - Hochparterre "die Besten" 2012





oberhalb Chur, Schangfiggerstrasse



Firma web-kartenversand
Firma web-buchversand



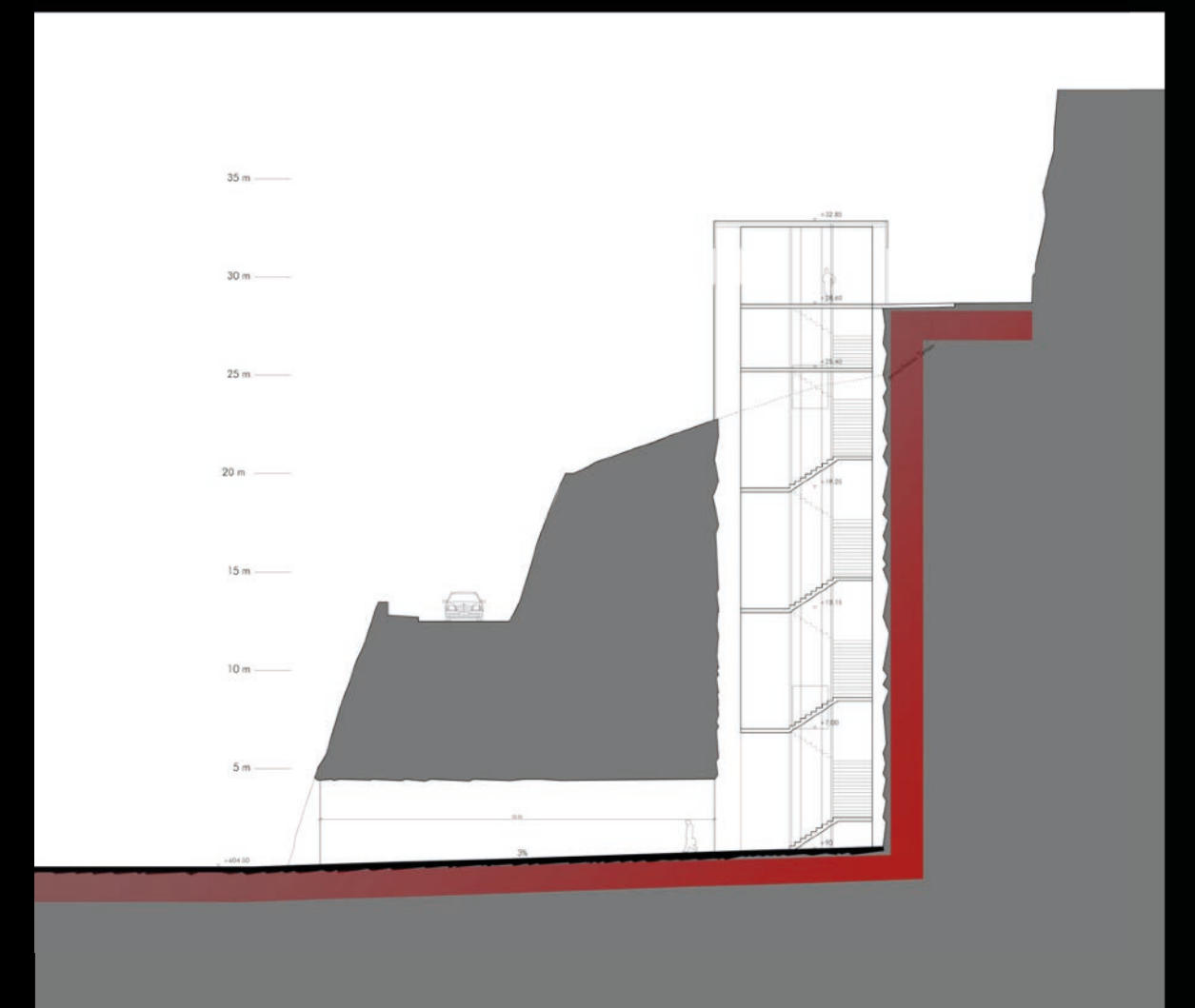
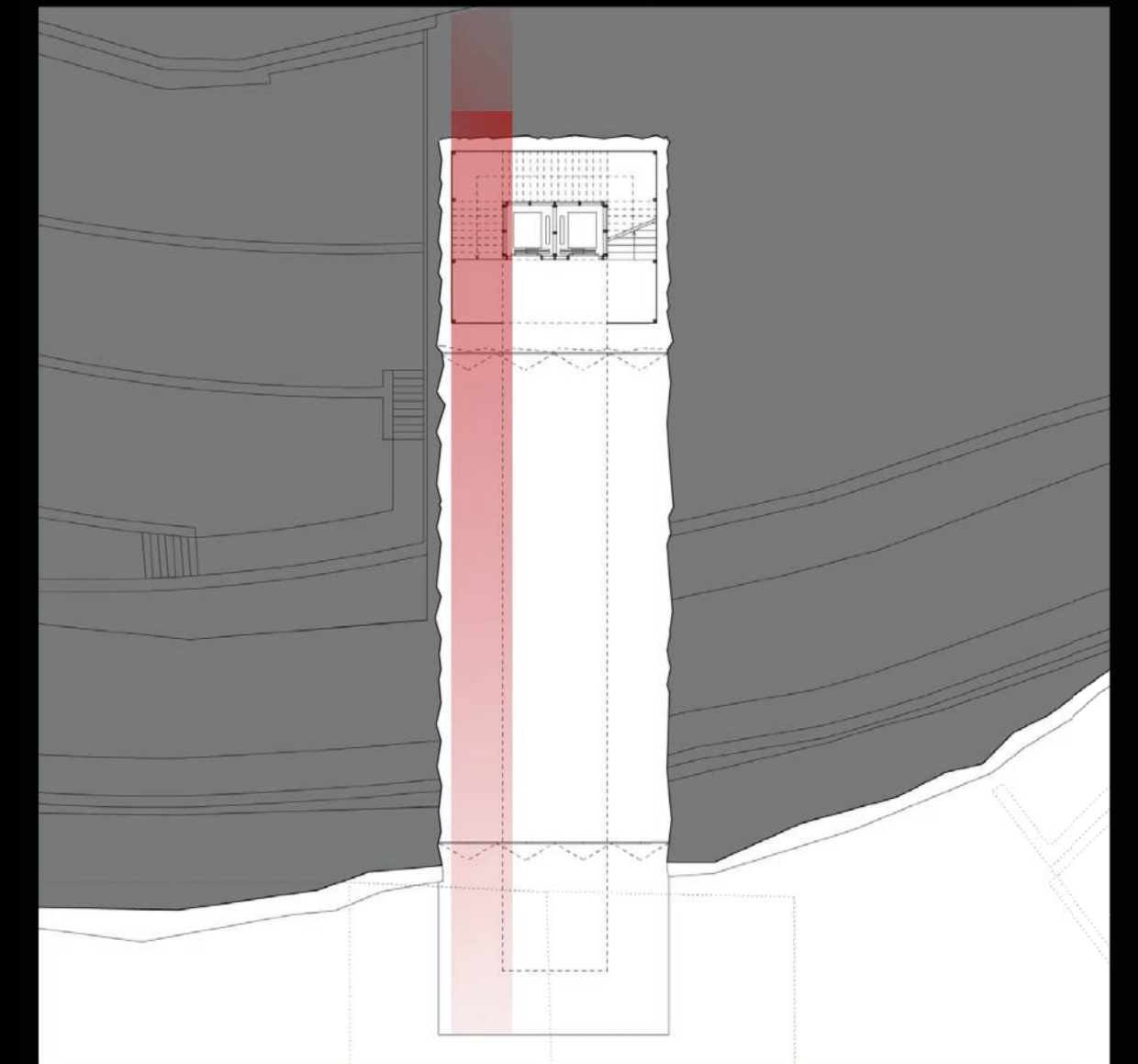
Historische Stadtansicht, alte Schangfiggerstrasse



Firma web-kartenversand
Firma web-buchversand



Historische Stadtansicht, alte Schangfiggerstrasse



Variantenstudium Fanzun Ingenieure







Hof

Kathedrale

Friedhof

St. Luzi

bischöflicher
Rebberg





Schulhaus Halde
Arch. Max Kaspar, 1971
Corten-Blech als
Fassadenverkleidung



Convikt
Arch. Otto Glaus, 1967-69
'topografische Architektur' aus
Sichtbeton





Schulhaus Halde

Schulhaus Cleric



Schulhaus Cleric
Arch. Andreas Liesch
Von Le Corbusier inspirierter
Betonbau







Strasse Chur-Arosa

Fussweg Schule-Konvikt

$\partial h = 35m$





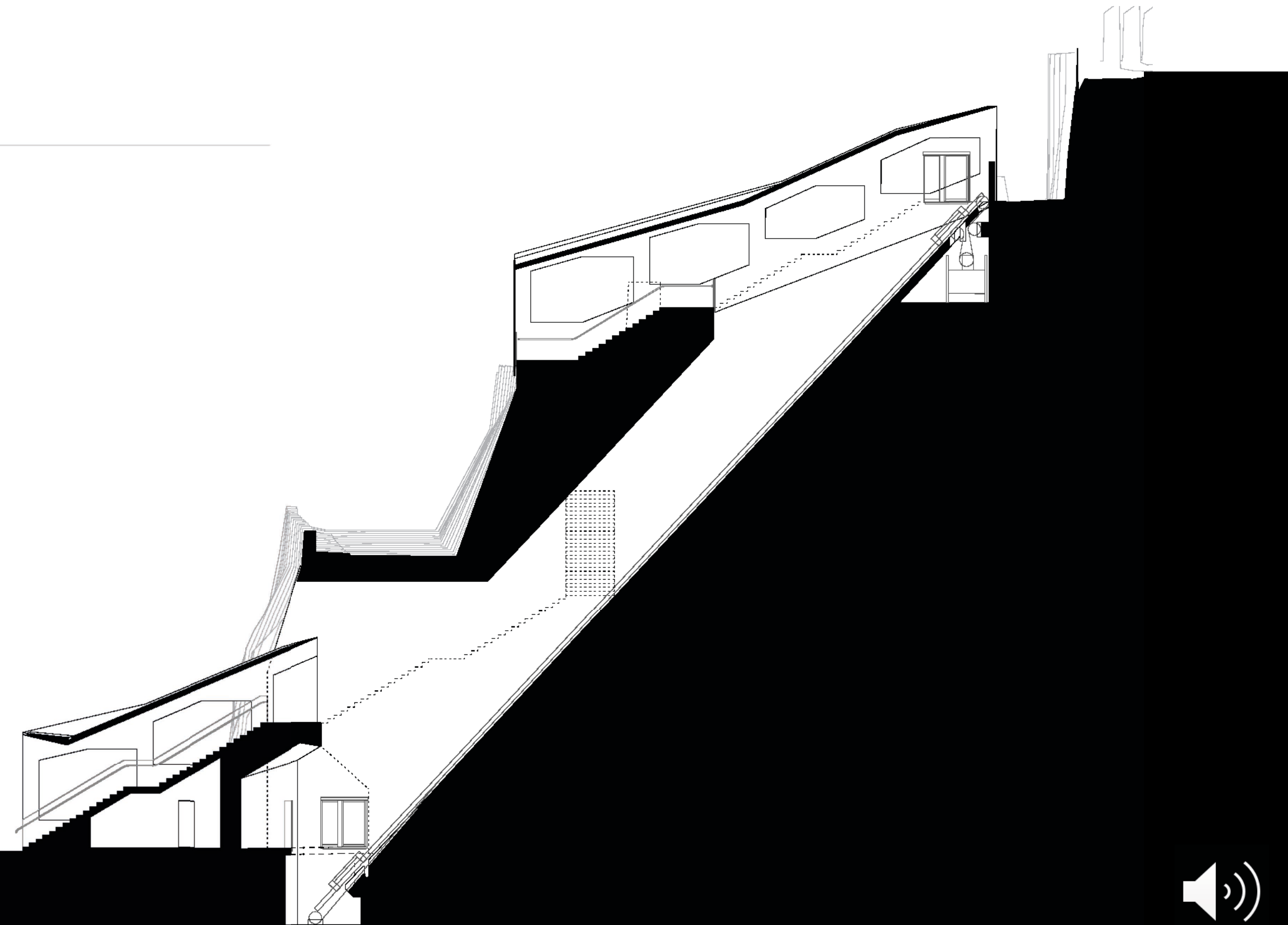
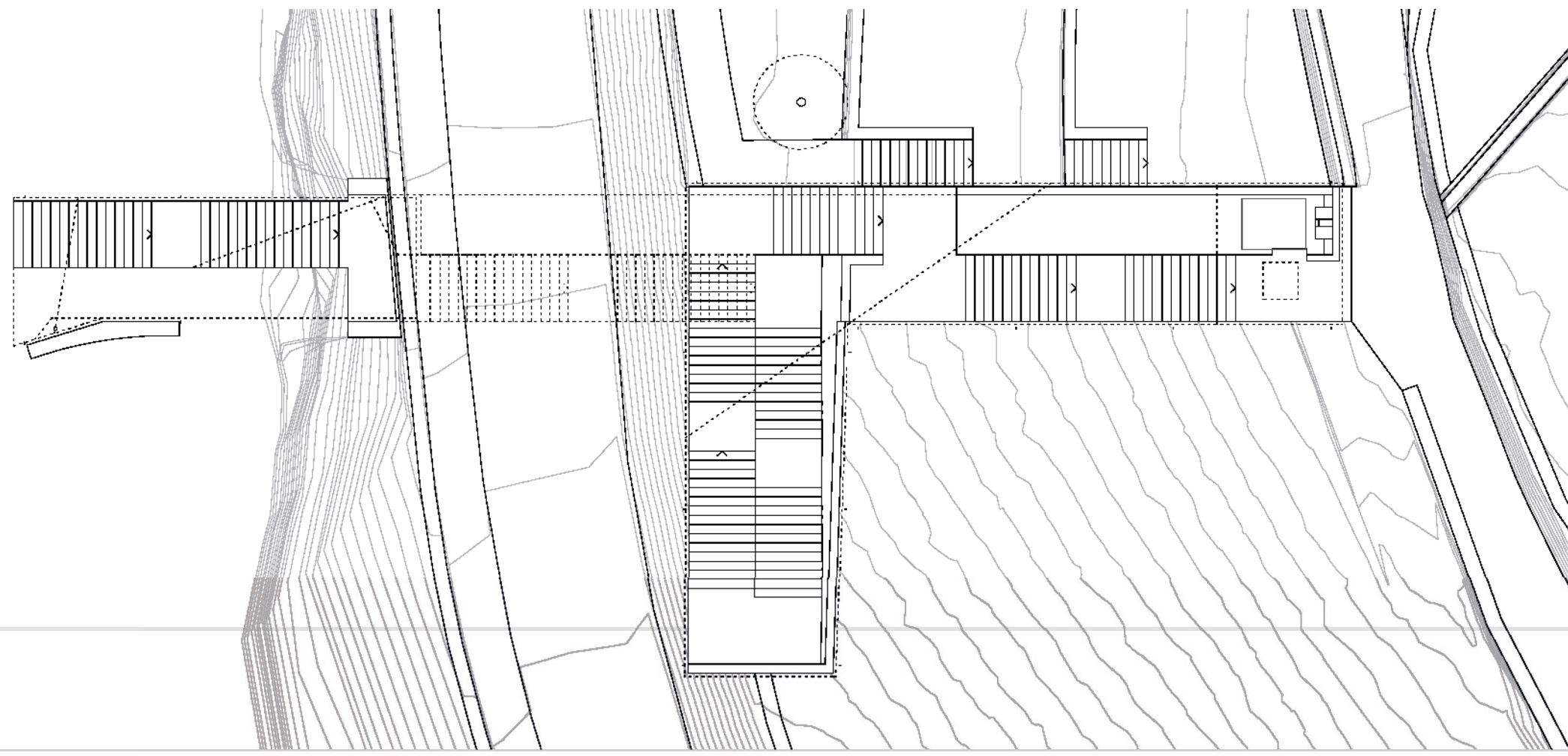
Santuario della Madonna di San Luca
Arch. Carlo Dotti, 1723-74
,Haus als Weg'

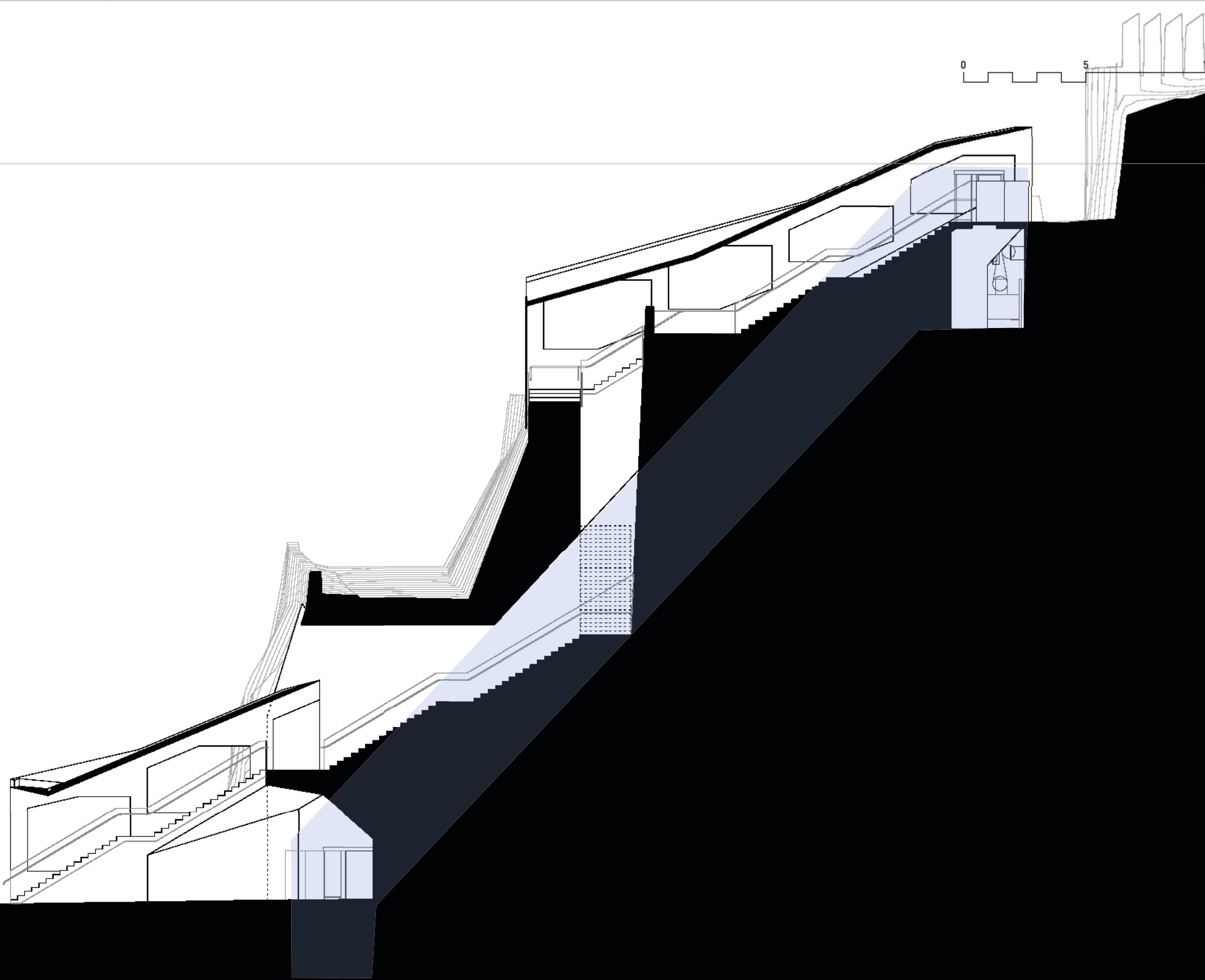
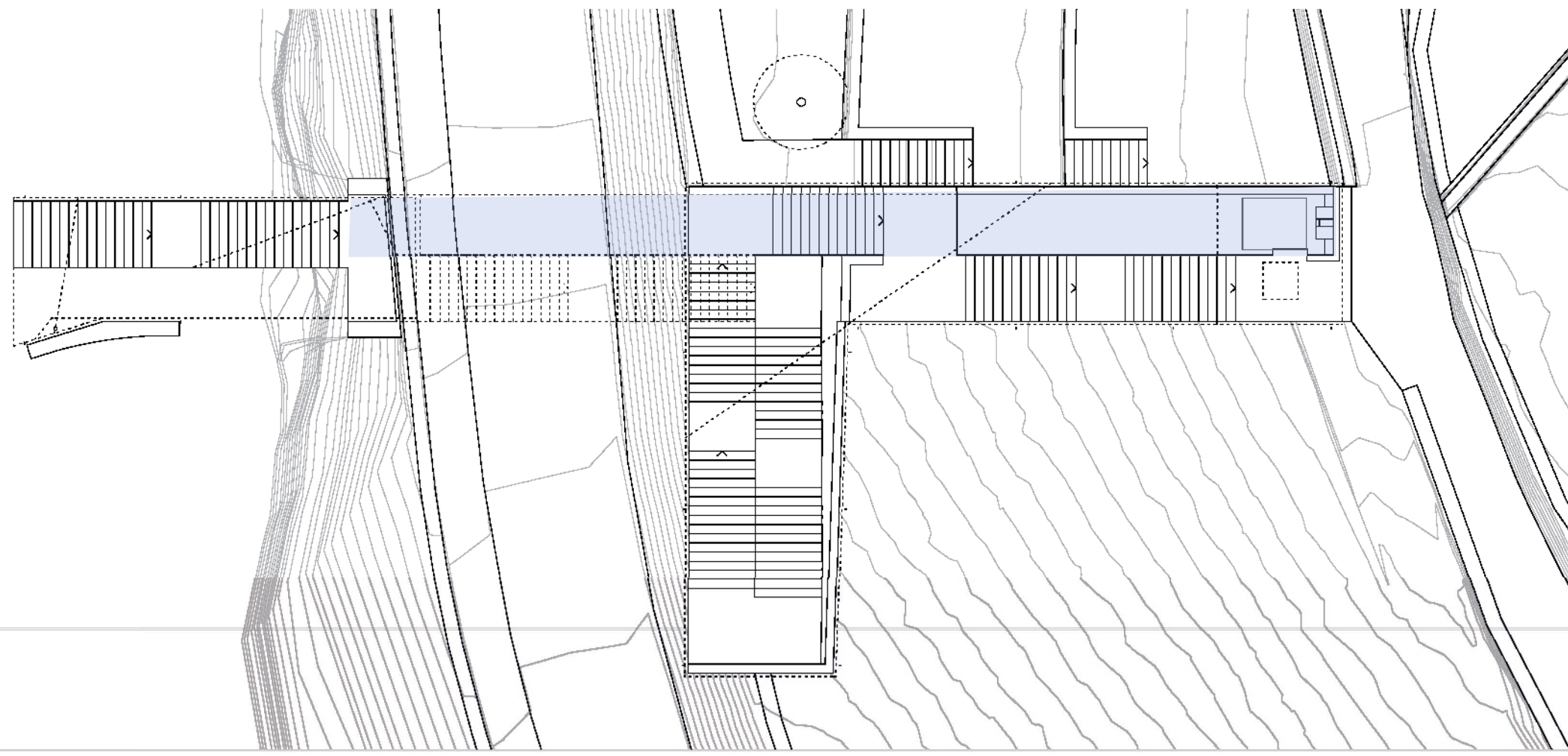


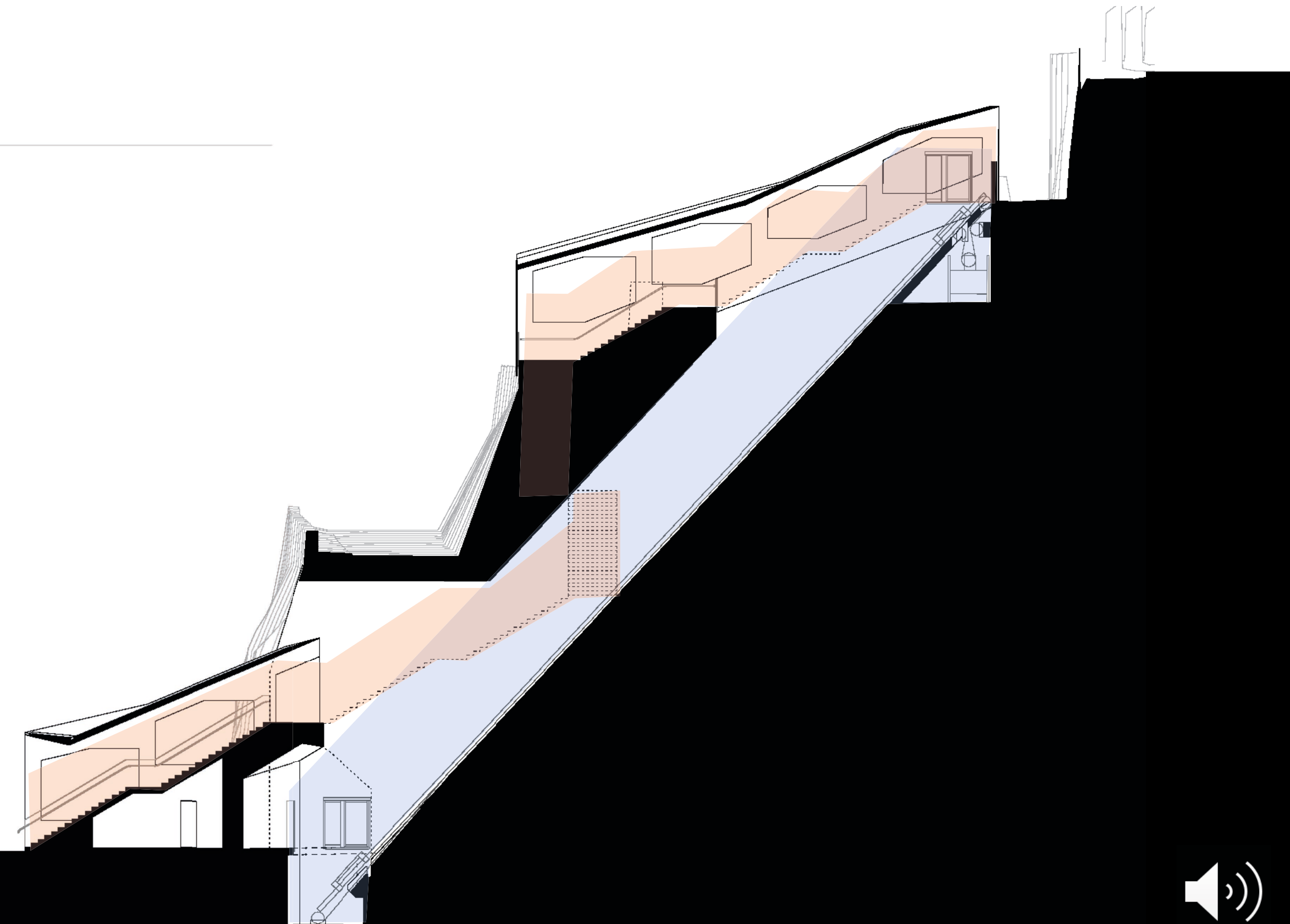
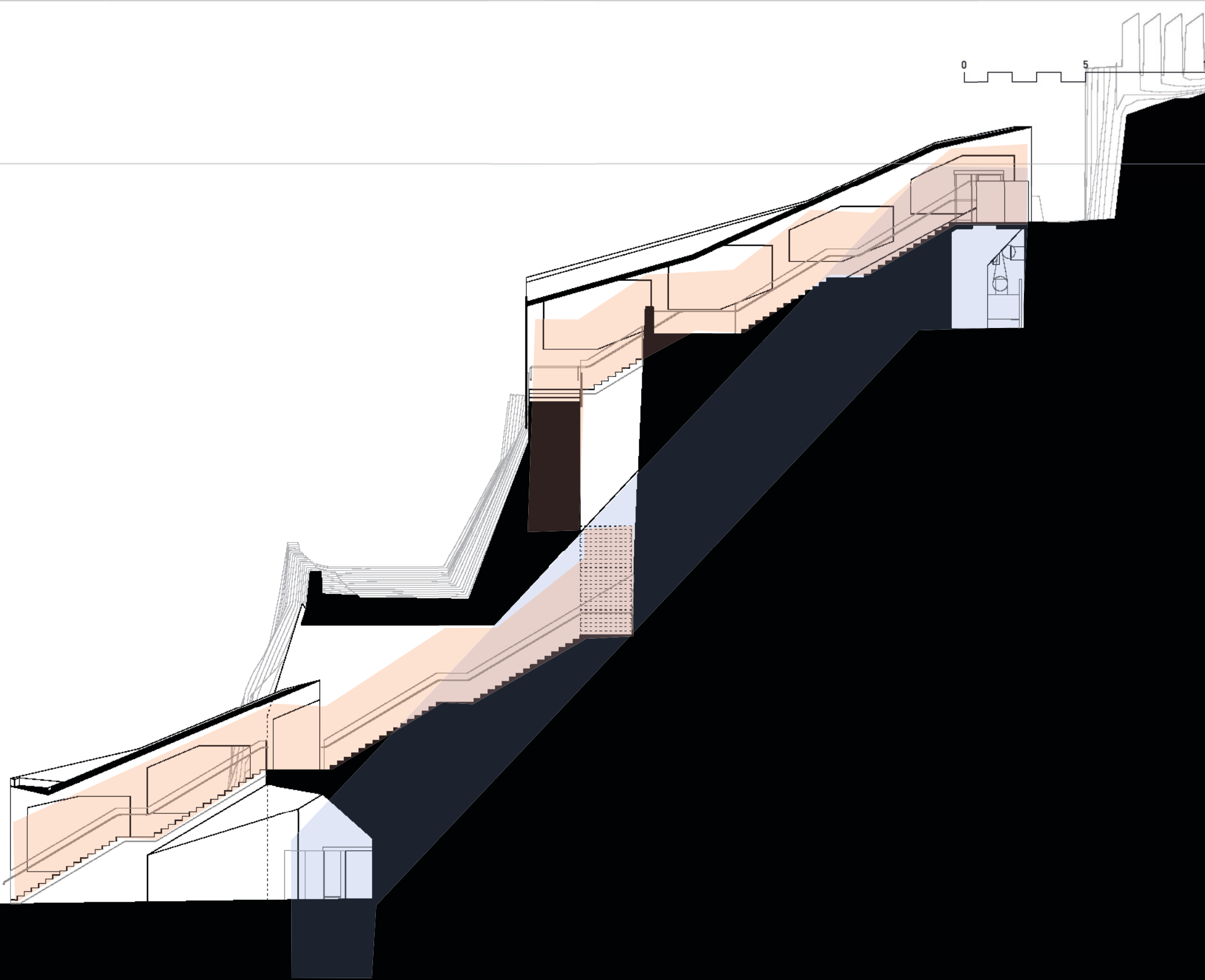
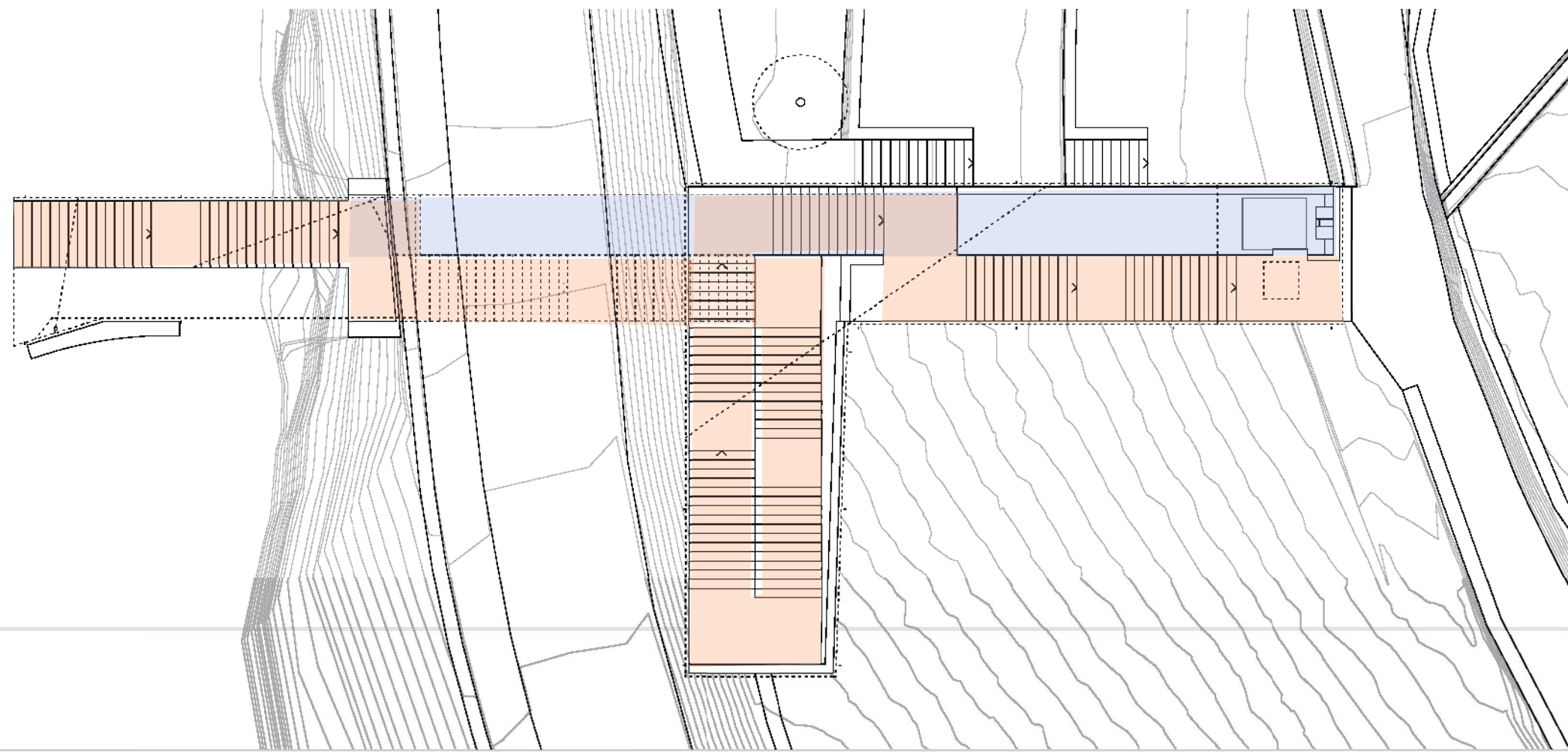


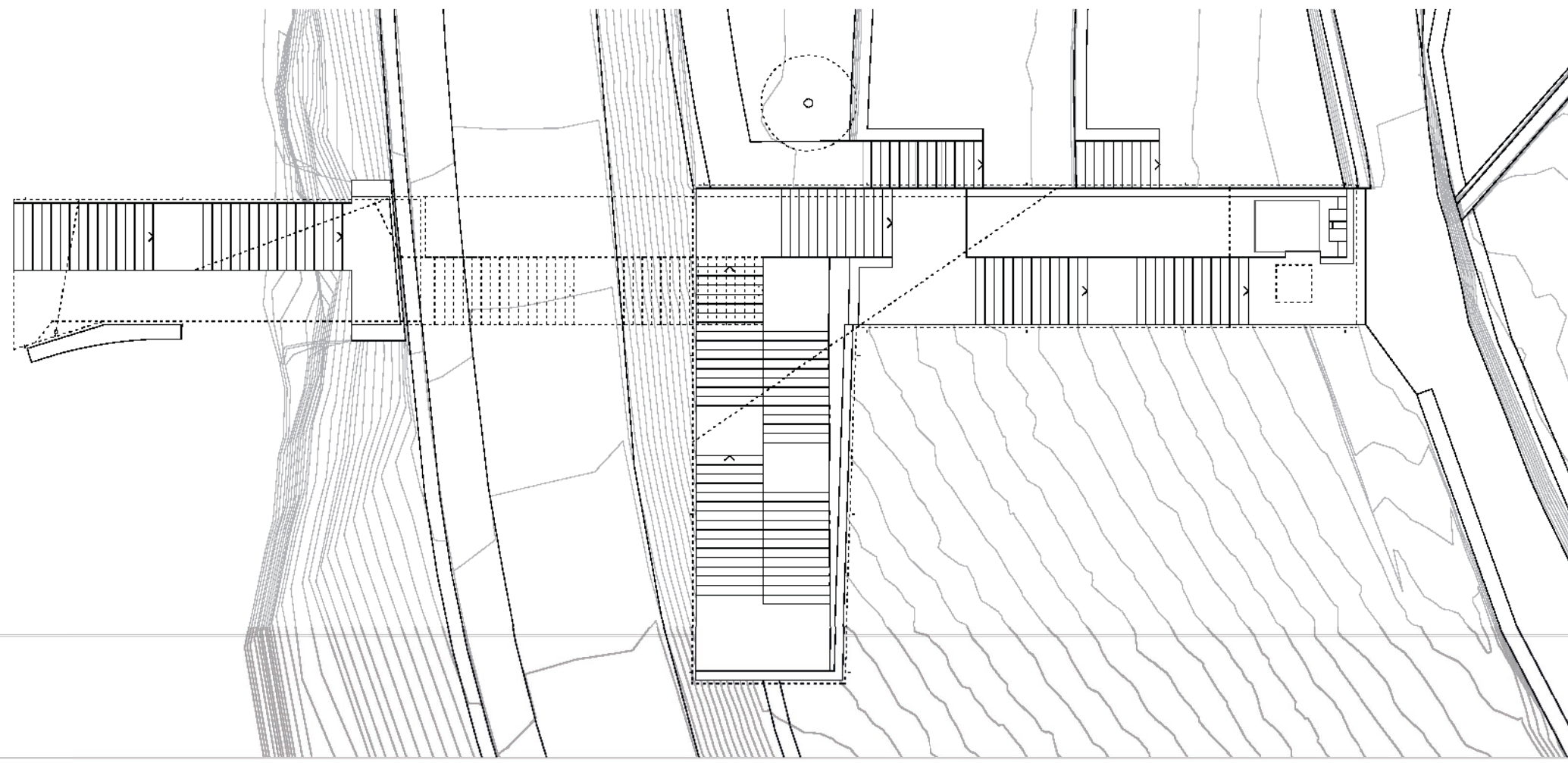
Santuario della Madonna di San Luca
Arch. Carlo Dotti, 1723-74
,Haus als Weg'





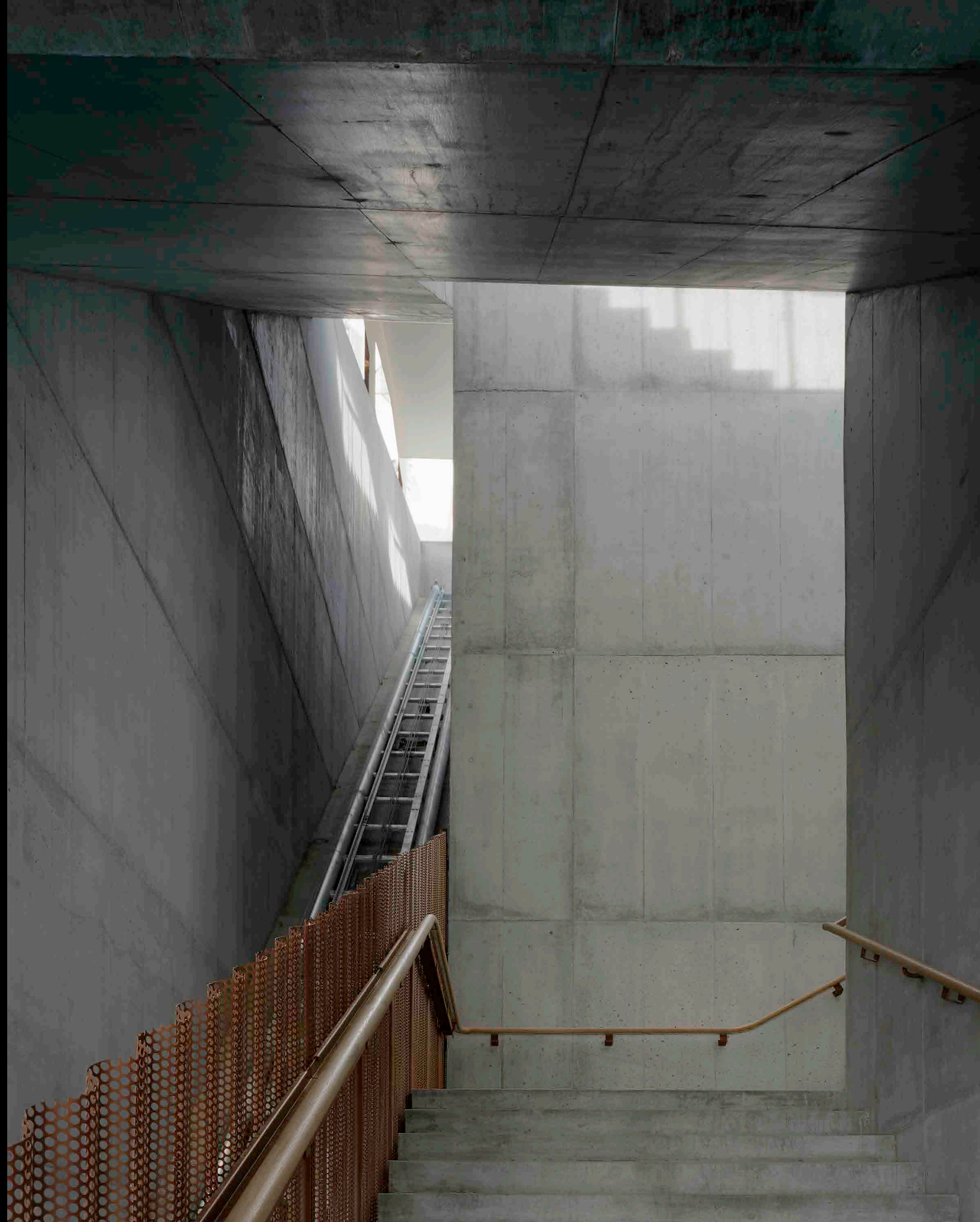




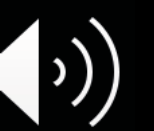


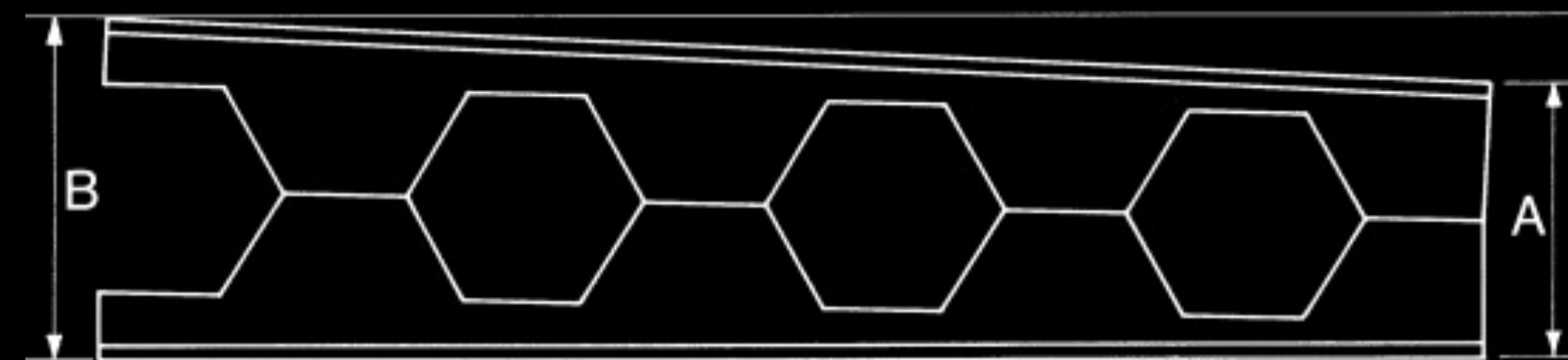
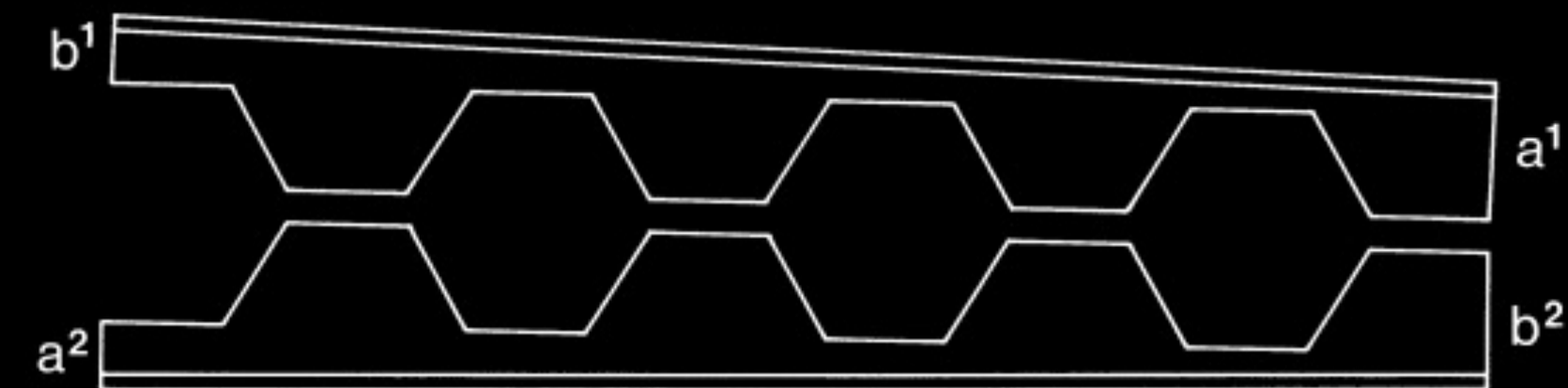
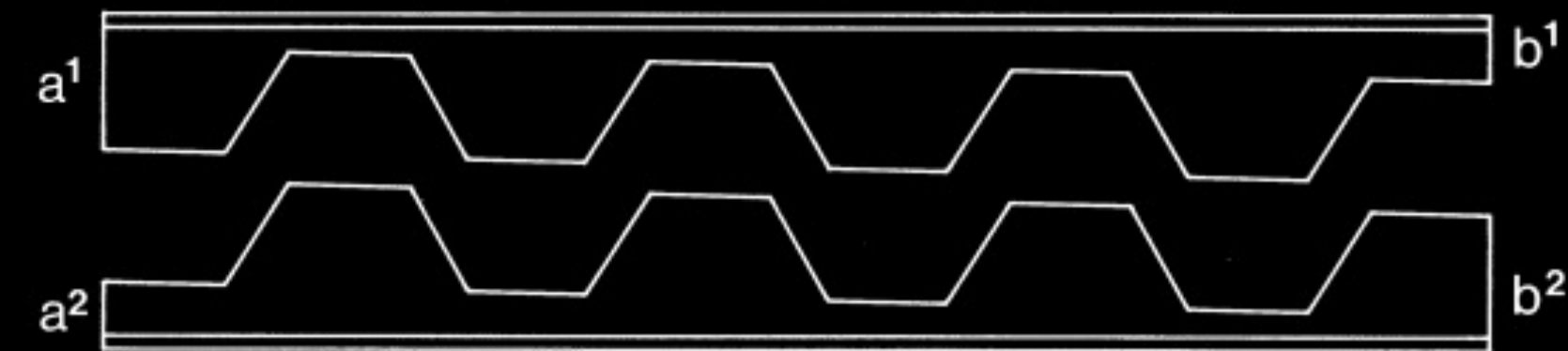
Piranesi Giovanni Battista
'Die Treppe zur Zisterne'
" Antichità d'Albano e di Castel Grandolfo "





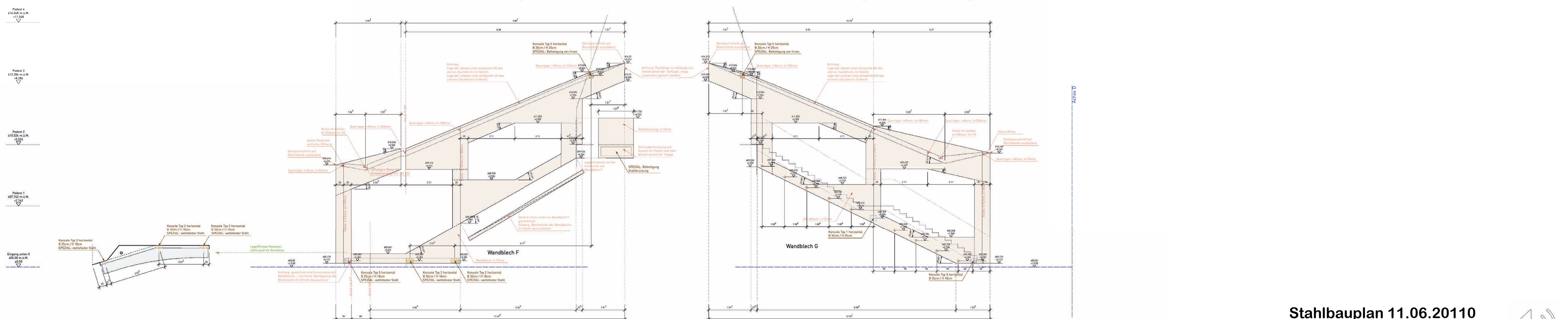
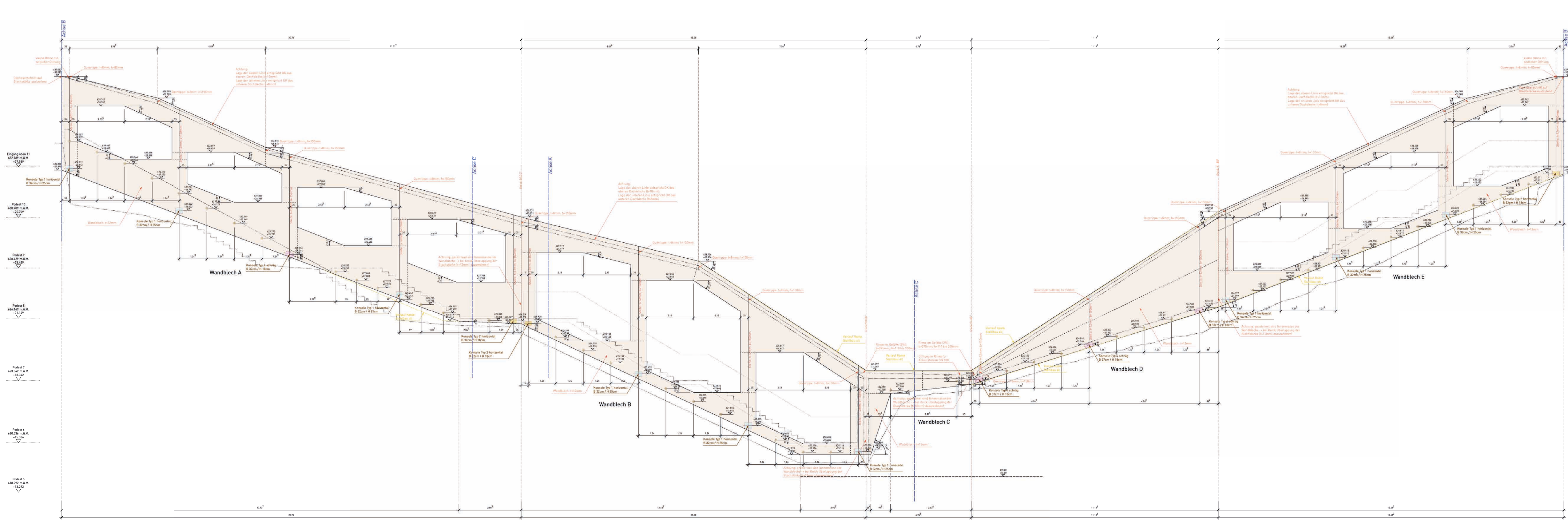
Piranesi Giovanni Battista
'Die Treppe zur Zisterne'
" Antichità d'Albano e di Castel Grandolfo "

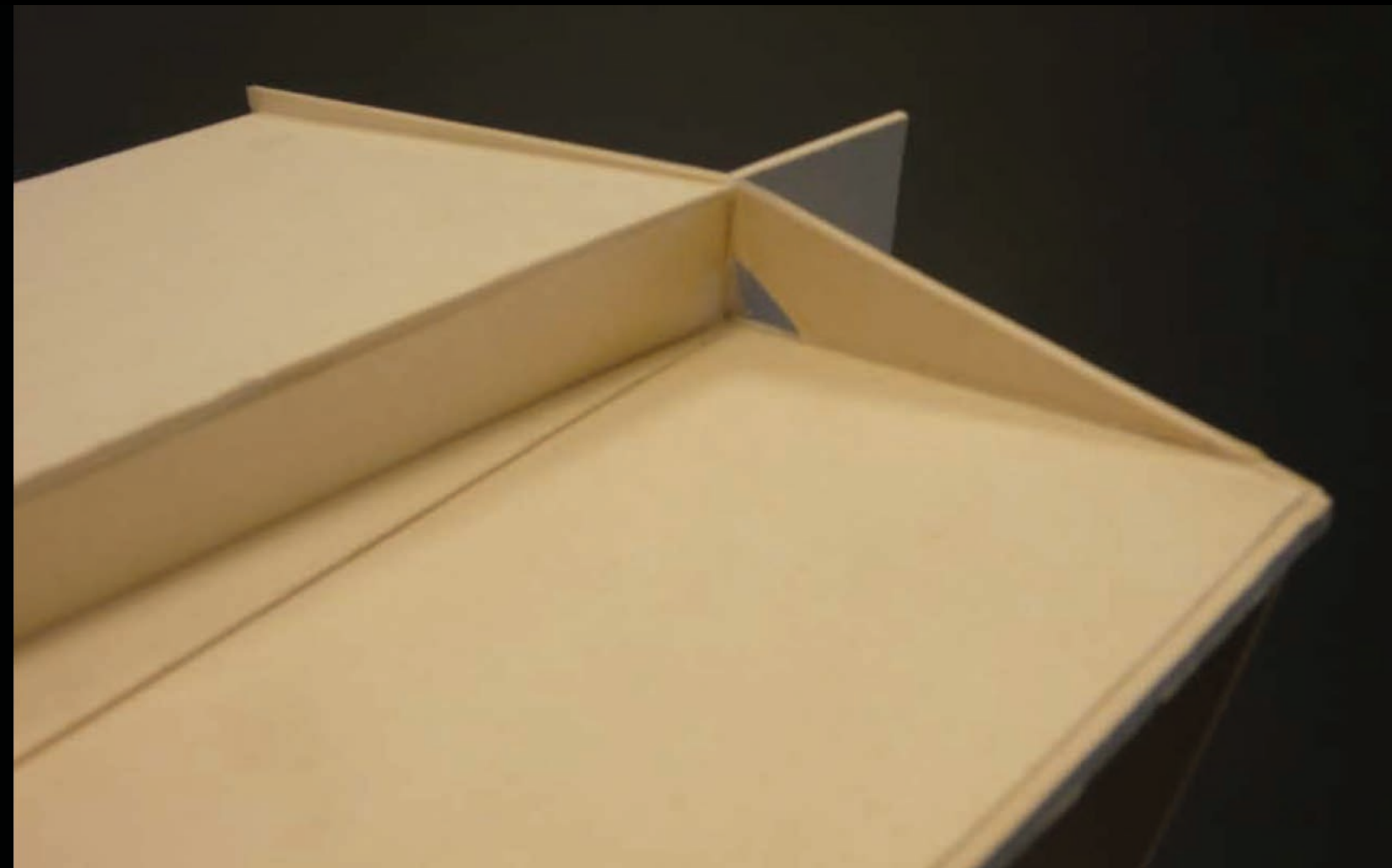
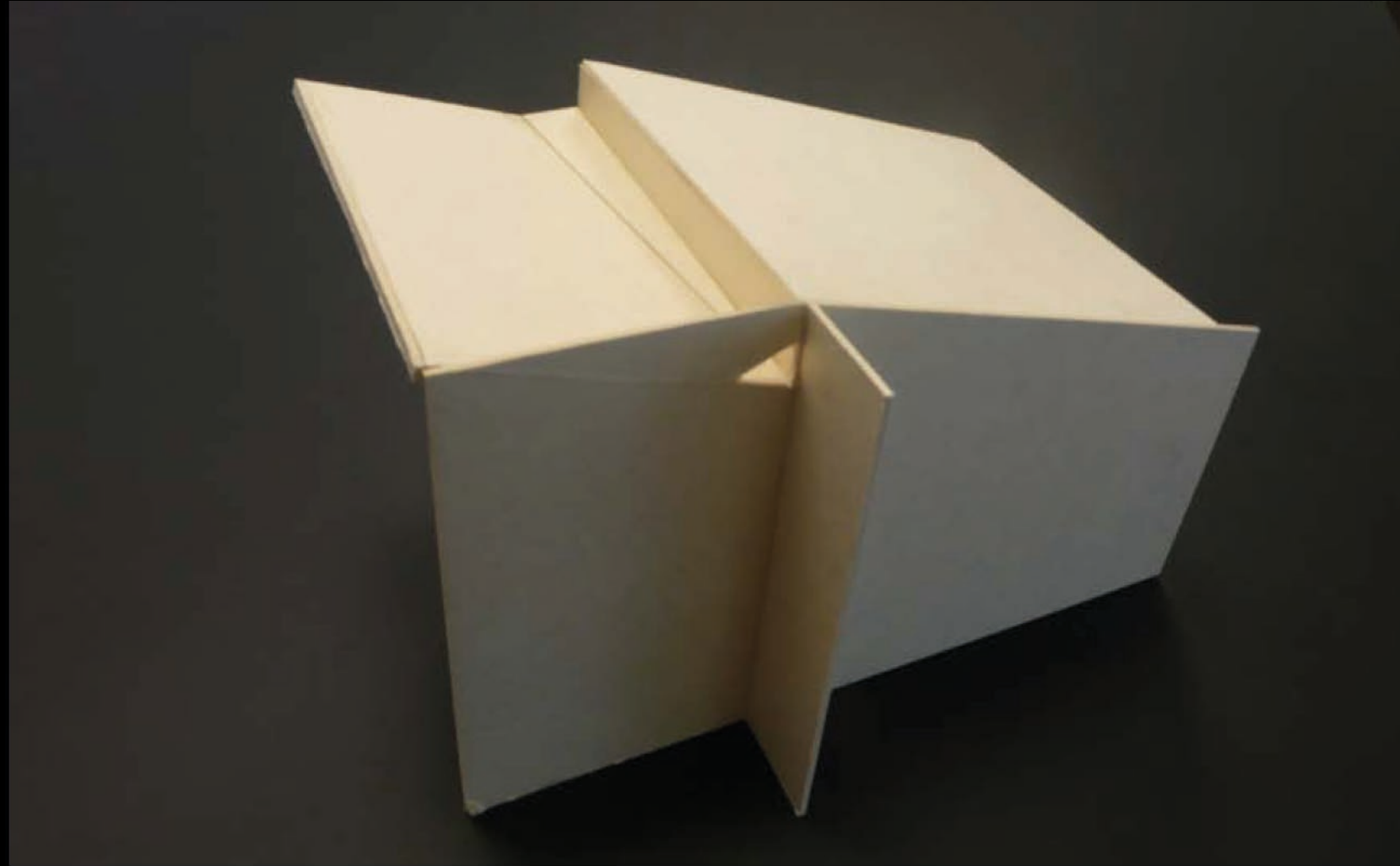


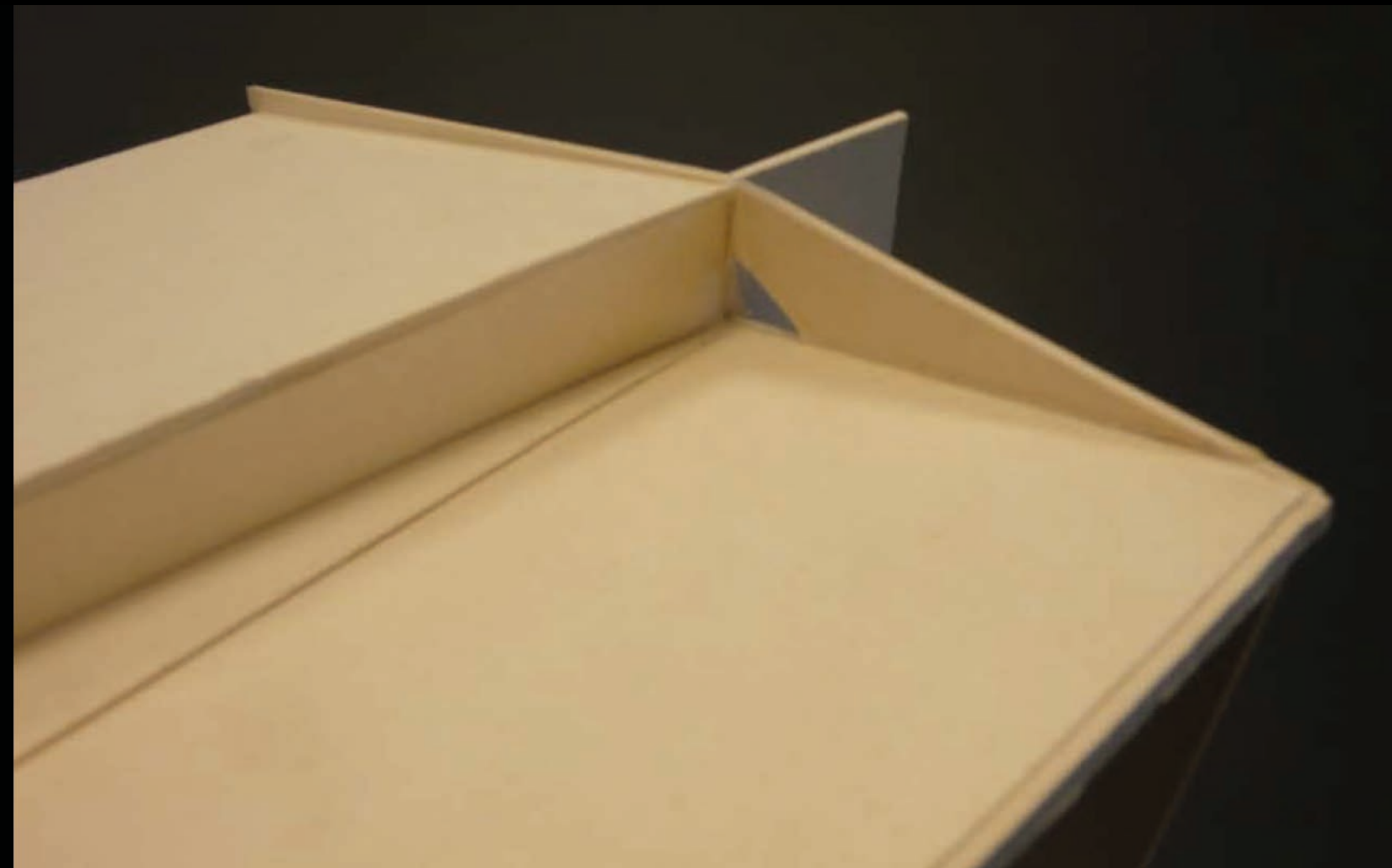
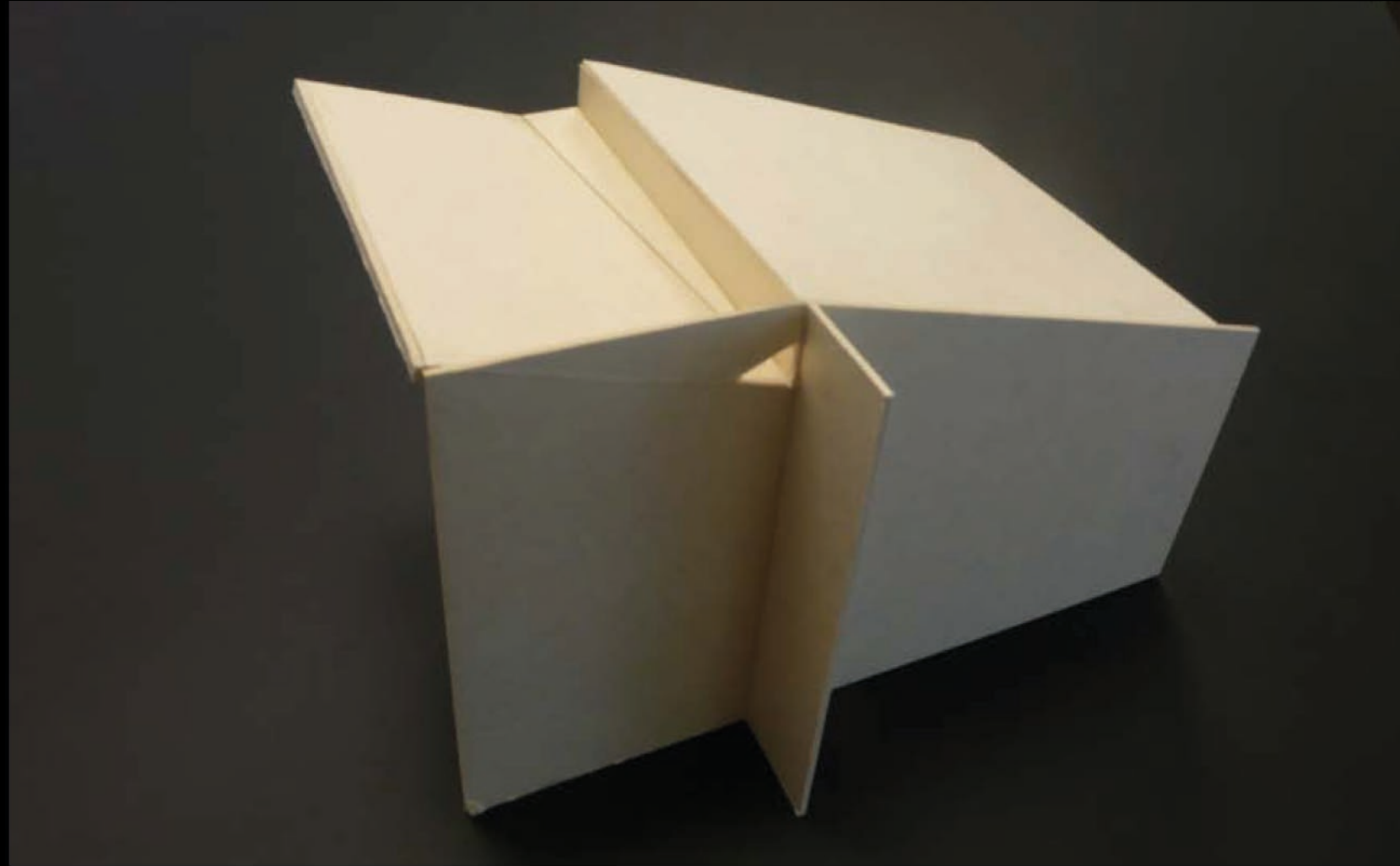


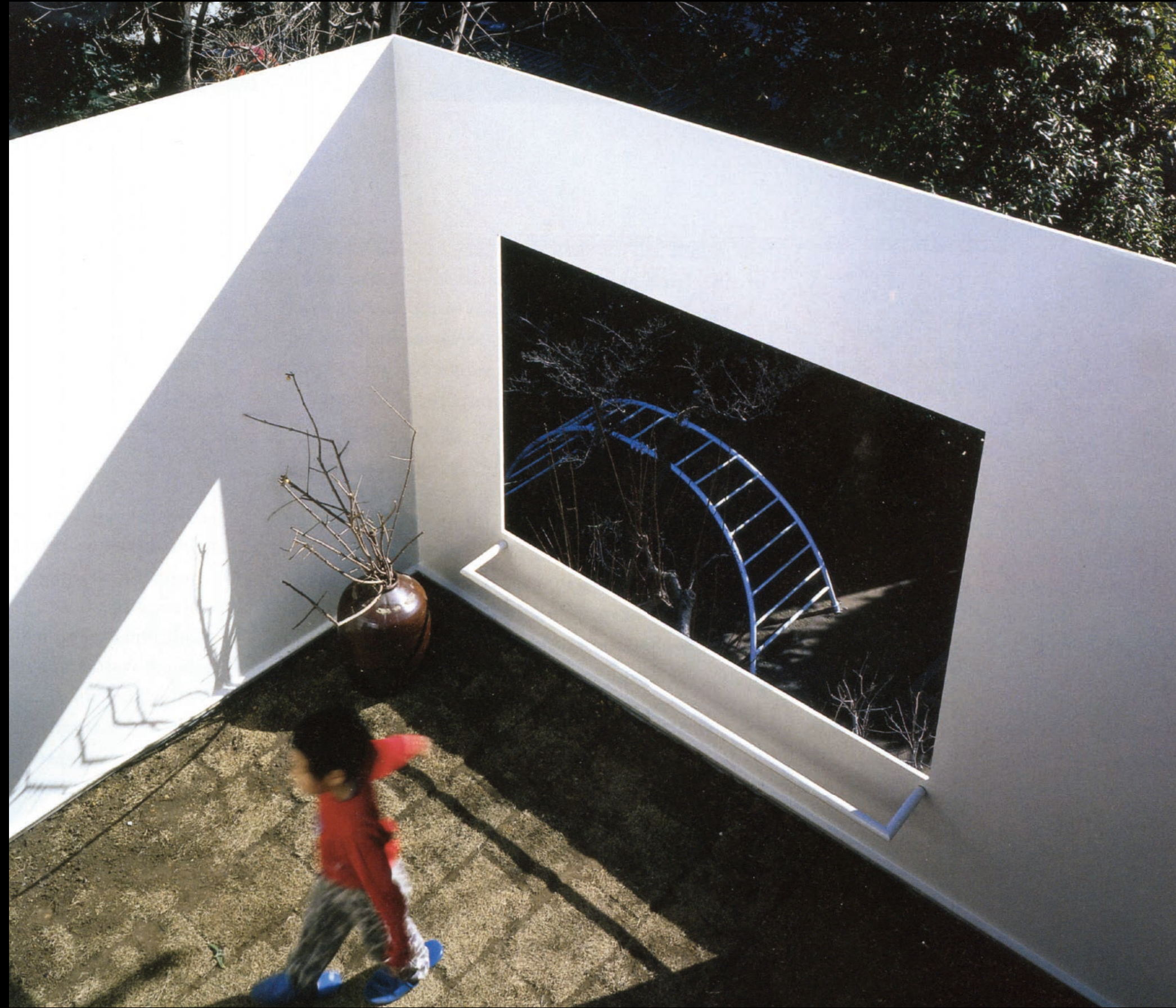
Prinzip Wabenträger





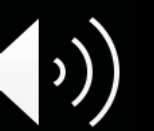
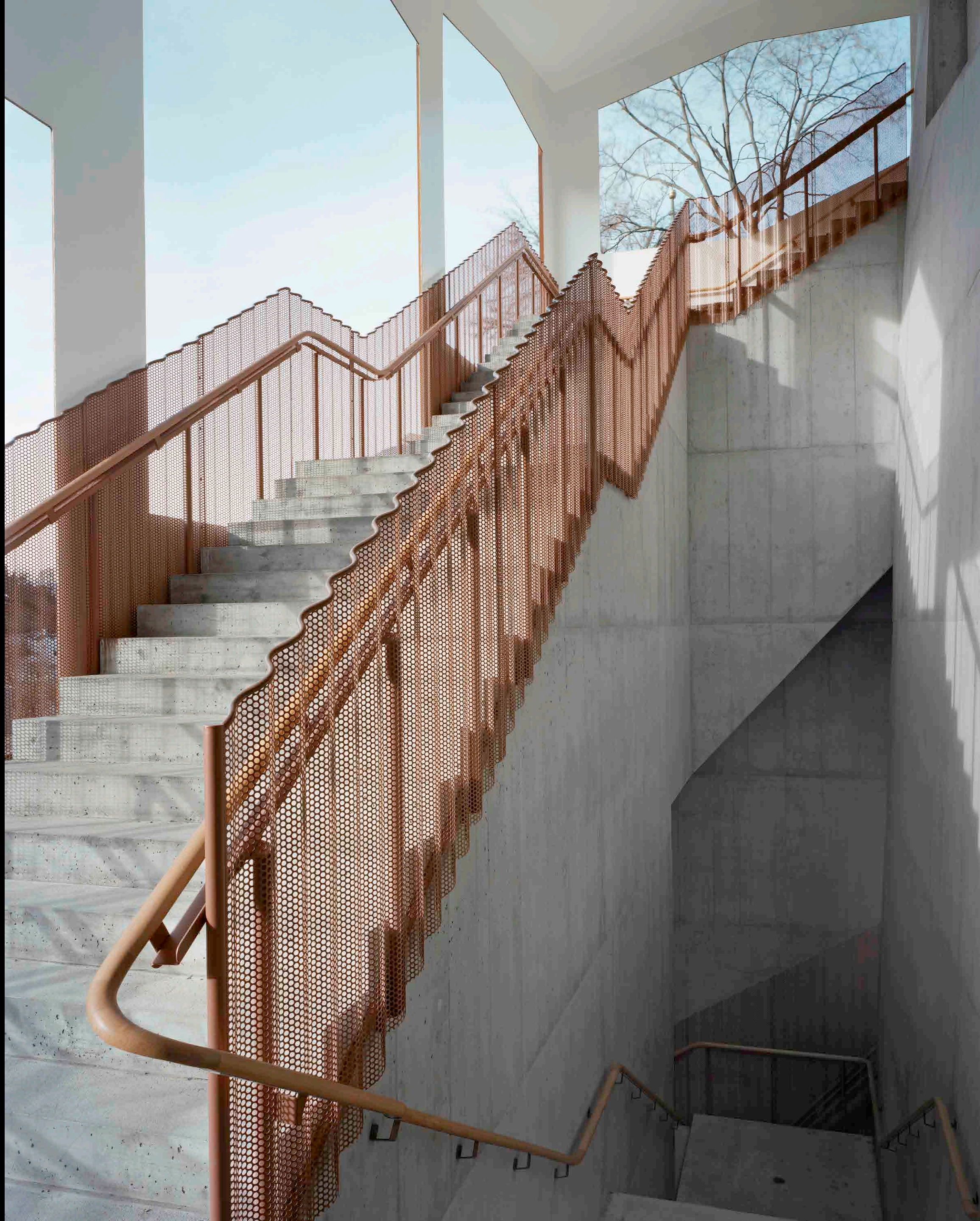


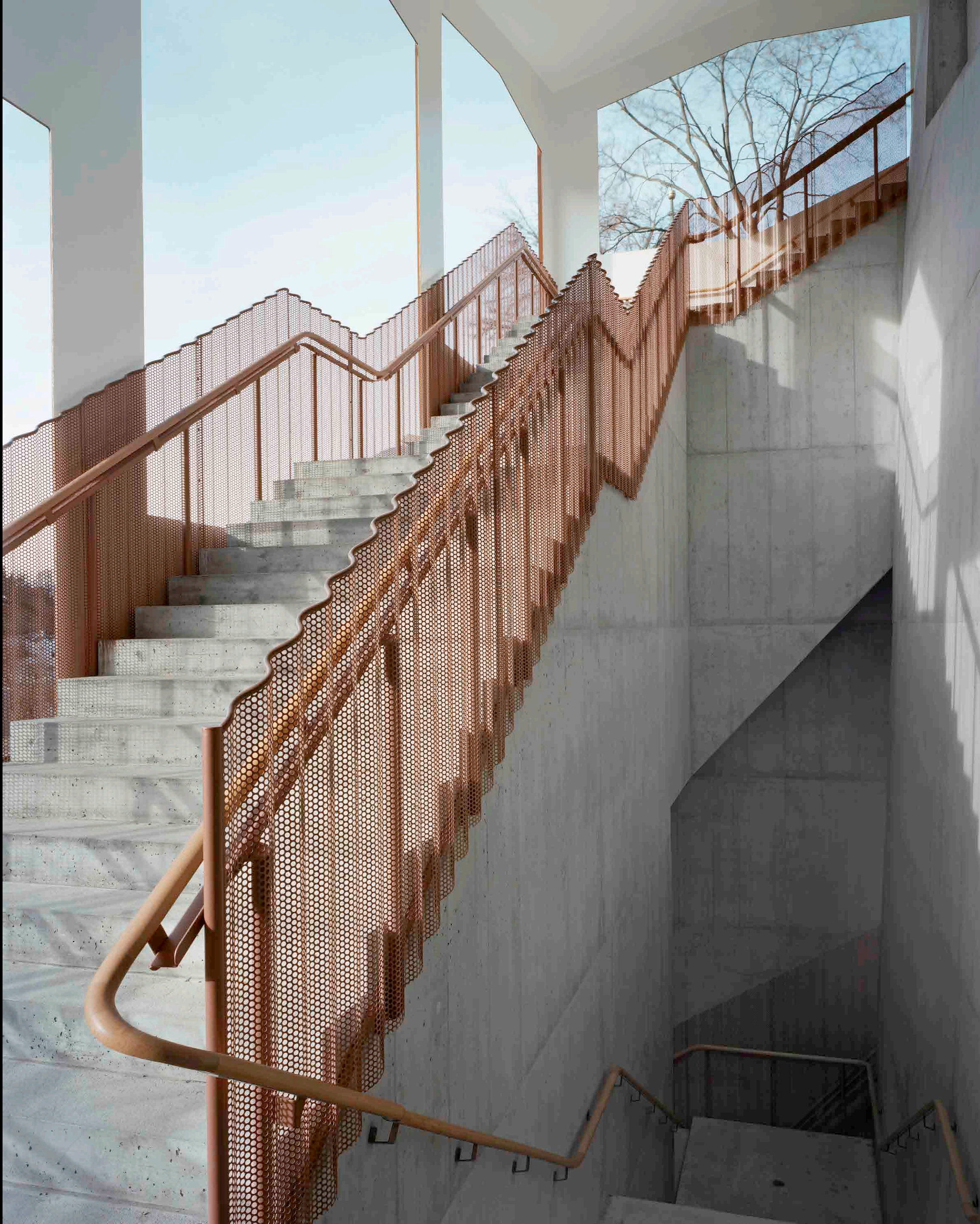




Plum Tree House, Tokio
Arch. Kazuo Sejim

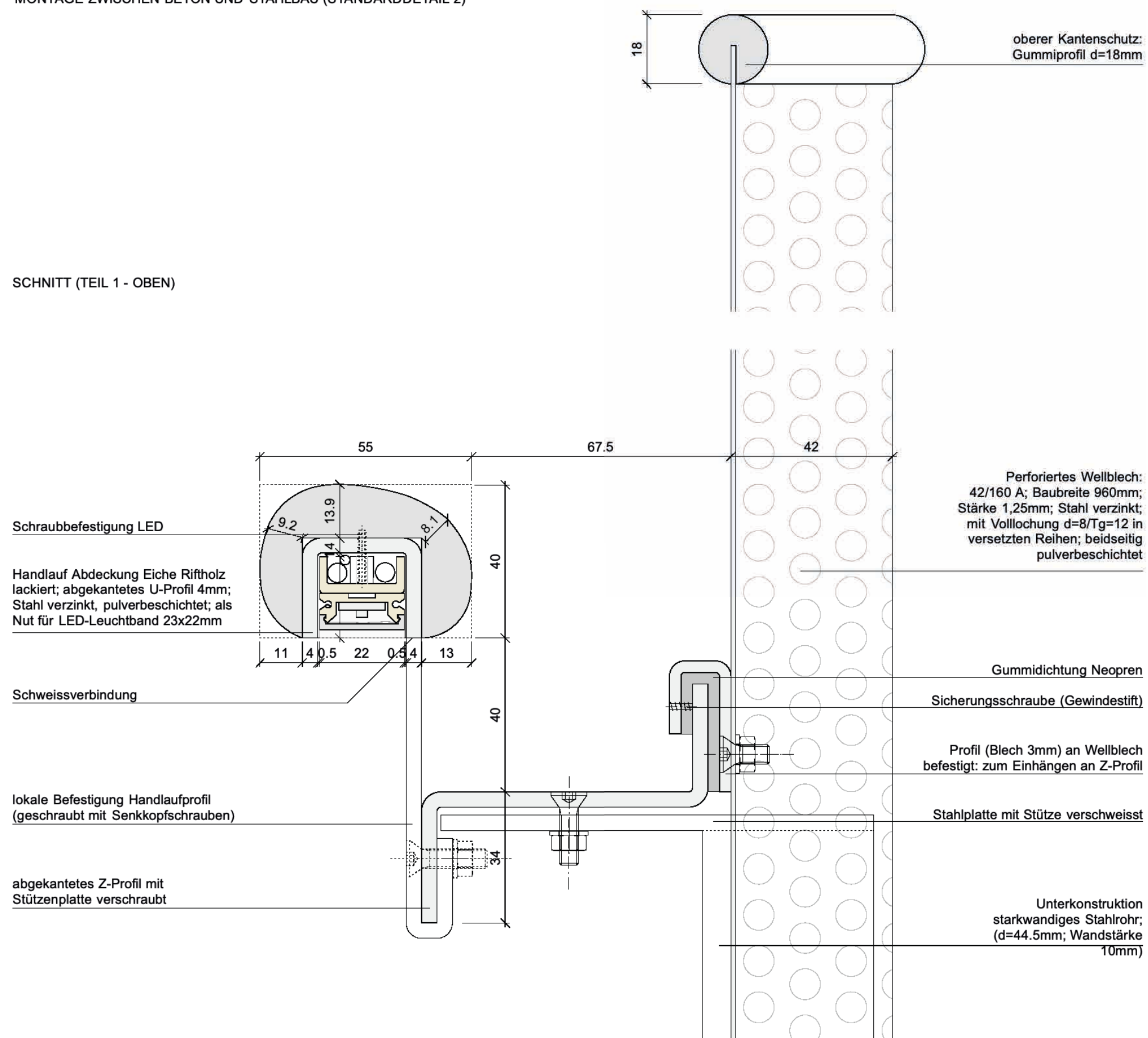






GELÄNDER MIT STÜTZEN UND WELBLECH
 FREI MONTIERBAR (STANDARDDETAIL 1)
 MONTAGE ZWISCHEN BETON UND STAHLBAU (STANDARDDETAIL 2)

SCHNITT (TEIL 1 - OBEN)

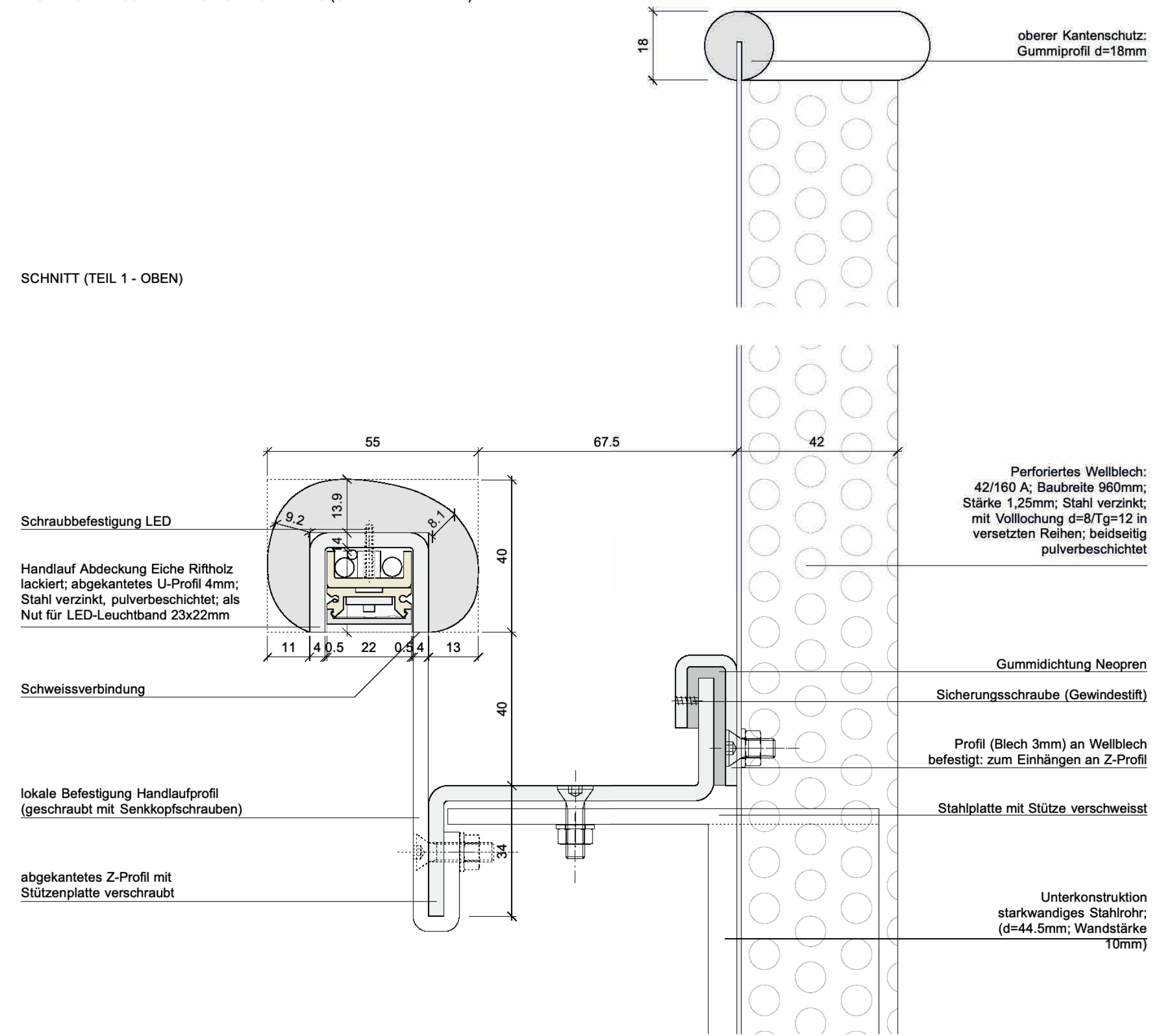


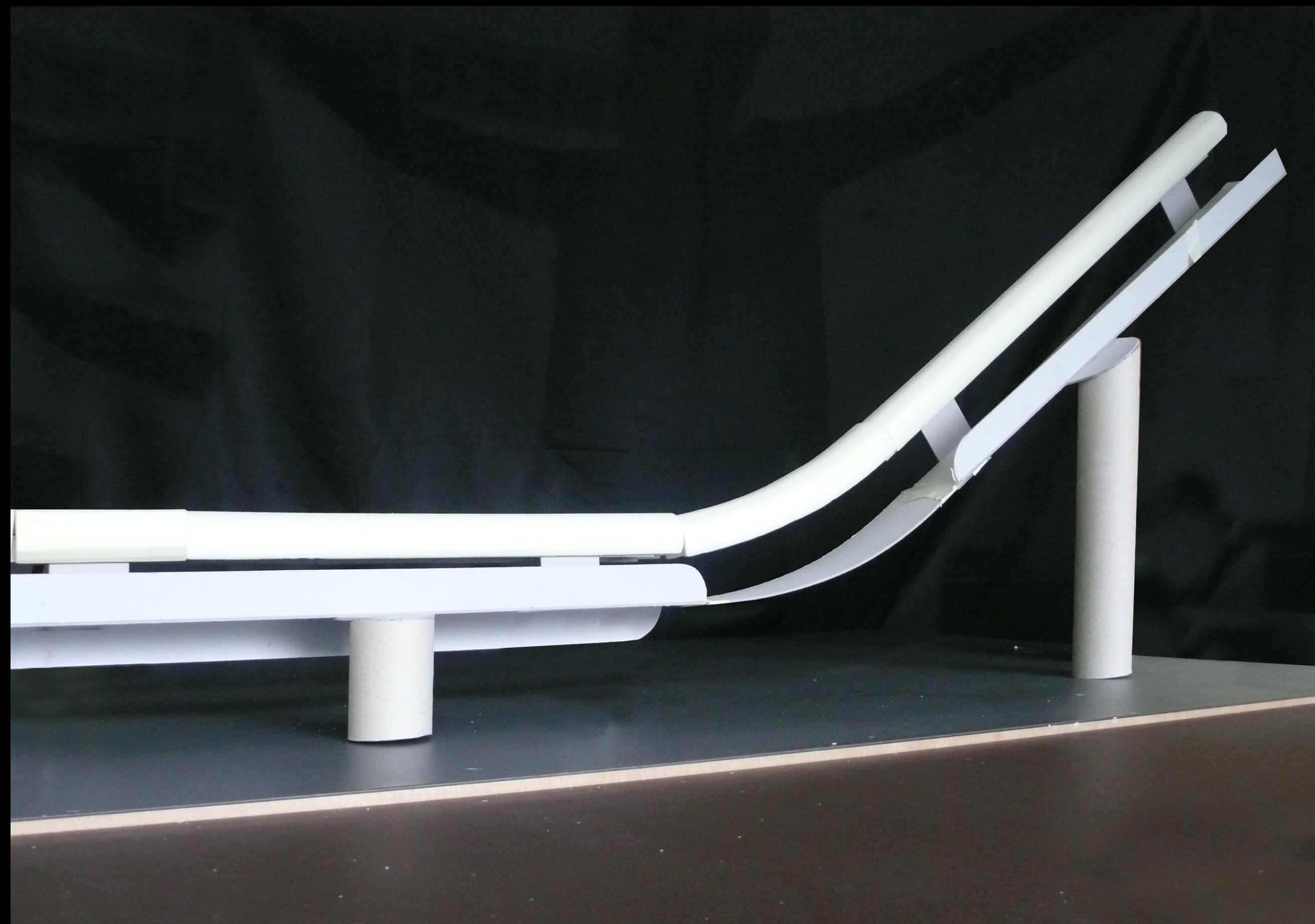
Handlauf
 Abdeckung Eiche Riffholz
 lackiert; abgekantetes U-Profil 4mm;
 Stahl verzinkt, pulverbeschichtet; als
 Nut für LED-Leuchtband 23x22mm



GELÄNDER MIT STÜTZEN UND WELBLECH
 FREI MONTIERBAR (STANDARDDETAIL 1)
 MONTAGE ZWISCHEN BETON UND STAHLBAU (STANDARDDETAIL 2)

SCHNITT (TEIL 1 - OBEN)











Esch Sintzel Architekten

Verbindung Plessur - Halde, Chur

Wettbewerb 2009, 1. Preis

Planung: 2009 - 10

Ausführung: 2011 - 12

Adresse: Verbindung Münzweg - Alte Schangfiggerstrasse, Chur

Programm: Fussgängerverbindung mit Schräglift

Bauherrschaft: Kanton Graubünden

Bausumme: CHF 5.4 Mio (BKP2)

Mitarbeit: Claudia Mühlebach

Baumanagement: Zoanni Architekten, Chur

Bauingenieur: Dr. Lüchinger + Meyer Bauingenieure AG, Zürich

Bilder: Walter Mair

Auszeichnungen: Prix Acier - Stahlbauzentrum 2014 / Hase in Bronze - Hochparterre "die Besten" 2012